



# GAT MONTHLY MEMBERSHIP PROGRESS REPORT

Results as of: 4/30/2023

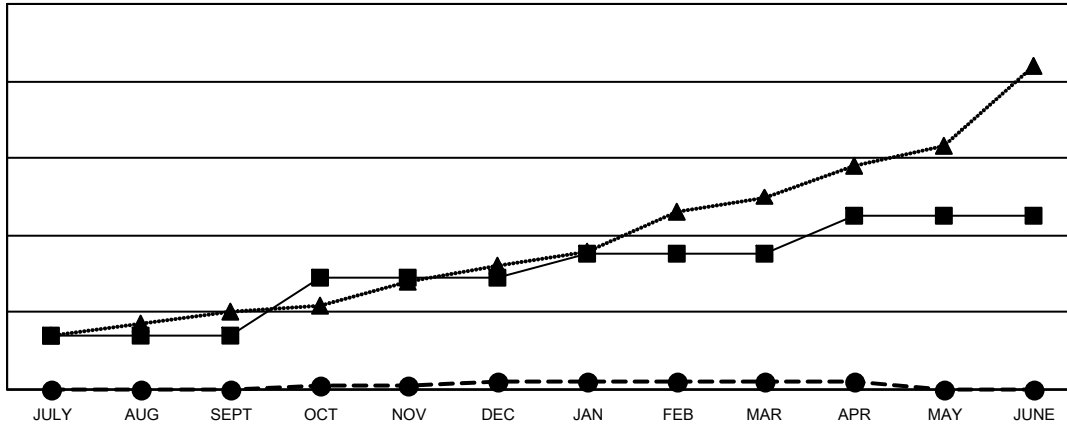
Multiple District 305

LOCATION: PAKISTAN

Clubs			
RESULTS FOR 2022-2023			
QUARTER	NEW CLUB GOAL	NEW CLUBS	DROPPED CLUBS
JULY/AUG/SEPT	14	0	3
OCT/NOV/DEC	15	2	21
JAN/FEB/MAR	6	0	5
APR/MAY/JUNE	10	0	1

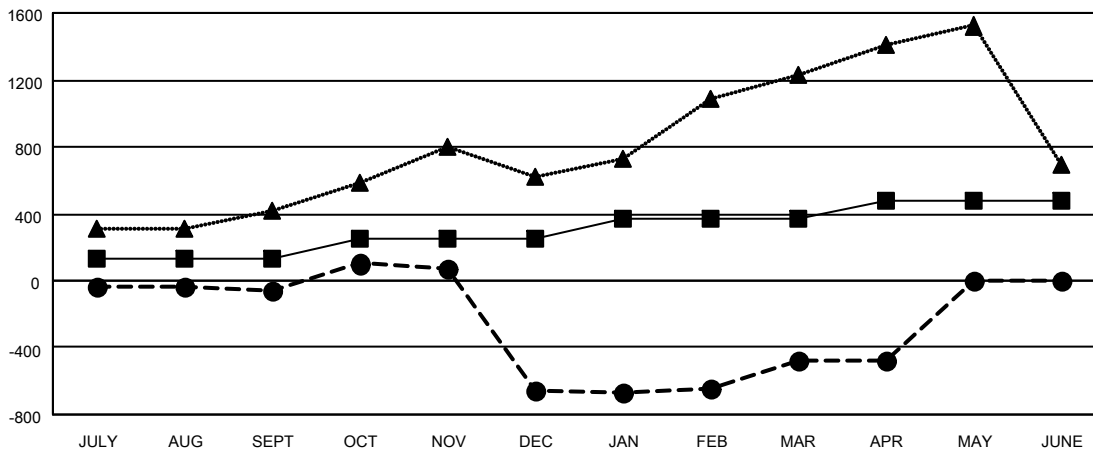
Members			
RESULTS FOR 2022-2023			
QUARTER	MEMBER GROWTH NET GOAL	MEMBER GROWTH ACTUAL	DROPPED MEMBERS ACTUAL (including transfers)
JULY/AUG/SEPT	135	223	266
OCT/NOV/DEC	120	438	983
JAN/FEB/MAR	110	420	156
APR/MAY/JUNE	115	81	59

GOALS AND ACTUAL NEW CLUBS CUMULATIVE



- - CURRENT YEAR GOALS FOR NEW CLUBS
- - CURRENT YEAR ACTUAL NEW CLUBS
- ▲ - LAST YEAR ACTUAL NEW CLUBS

GOALS AND ACTUAL MEMBERS CUMULATIVE



- - MEMBER GROWTH NET GOAL
- - MEMBER GROWTH ACTUAL
- ▲ - LAST YEAR MEMBERSHIP ACTUAL

<b>DROPPED CLUBS: 30</b>	
<b>DROPPED MEMBERS</b>	
DECEASED	3
CLUB CANCELLED	463
OTHER	998
<b>TOTAL</b>	<b>1,464</b>

156 CLUBS OF 406 ADDED 1 OR MORE NEW MEMBERS

[CLICK HERE FOR CUMULATIVE MEMBERSHIP DATA](#)

GENDER DISTRIBUTION	
MALE	6,310 (75.50%)
FEMALE	2,048 (24.50%)
NON BINARY	0 (0.00%)
PREFER NOT TO ANSWER	0 (0.00%)
<b>TOTAL FAMILY UNIT MEMBERS</b>	<b>6,932</b>
<b>FAMILY MEMBERS PAYING HALF DUES</b>	<b>5,284</b>